



DATASHEET

GripFactory Anti-Slip Glow in the Dark Tape

GripFactory Anti-Slip Glow in the Dark Tape is the solution to provide the stairs, intermediate platforms or other steps with an anti-slip layer. GripFactory Anti-Slip Glow in the Dark Tape can also be used as signaling. GripFactory Anti-Slip Glow in the Dark Tape is available in the standard widths 25, 50 mm or 100 mm, on rolls of 18 meters or in strips of 150 x 610 mm. GripFactory Anti-Slip Glow in the Dark Tape is available from stock in the colors standard and black / white (signaling).

How does it work?

GripFactory Anti-slip Glow in the Dark Tape is very easy to apply yourself. Due to the special surface structure, this anti-slip tape has an extremely high anti-slip value, but is still very easy to keep clean. During the day Antislip Glow in the Dark anti-slip Tape has a mild green shade, in the dark it emits a bright white light. Glow in the Dark Anti-slip tape can be charged by natural or artificial light sources. The duration of the light emission depends on the amount of light received.

Benefits

With GripFactory Antislip Glow in the Dark Tape you are assured of a long-lasting solution against slips.

- Hygienic
- Easy to apply
- Removable
- Sustainable
- Can be cut to size
- No tripping hazard

Areas of application

- Stairs
- Intermediate platforms

Suitable for the following surfaces

- Acrylic & Polyester
- Concrete
- Epoxy
- Ceramic tiles
- Marble & Granite
- Polyester
- Tear plate
- Stairs

GripFactory B.V.

Industrieweg 4 H
3442 AE Woerden
The Netherlands

☎ +31 (0)348 - 20 30 00

✉ info@gripfactory.nl

🌐 www.gripfactoryantislip.com

Technical data

Topix	Resultt	Test method
Back carrier	0.1 mm PVC	Caliper method
Adhesive type	Solvent acrylic	n/a
Mineral type	Aluminum oxide	n/a
Adhesion to steel (g / 25.4 mm ²)	1500	PSTC-4
Tensile strength (kg / 25.4 mm ²)	6.0	PSTC-31
Tear resistance (g)	5600 +/- 200	PSTC-39
Peel adhesion (N / 25 mm)	21.1	180° FINAT FTM I
Tensile strength (N / 25 mm)	95.7	Lloyd, 500 N load cell
Elongation at break	25%	PSTC-31
Temperature range	-30 to + 70°C	n/a
Resistance to water (months)	10	PSTC-35
Resistance to chemicals (months)	8	PSTC-35
Resistance to engine oil	Excellent	PSTC-35
Lifespan (months)	12 to 24	PSTC-9

Photoluminescent (mcd / m²)

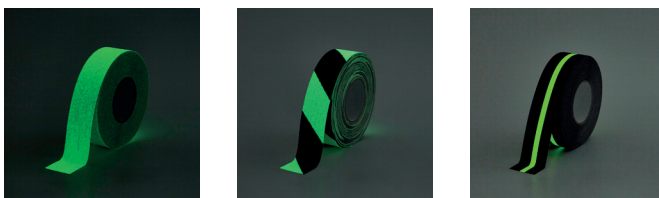
Time (minutes)	Glow in the Dark	Glow in the Dark Hazard	Glow in the Dark Strip
2	30	30	n/a
5	n/a	n/a	11.8
10	5	5	4.6
20	n/a	n/a	1.6

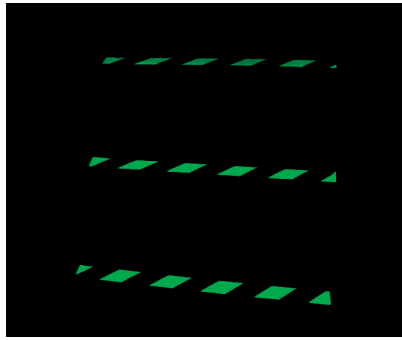
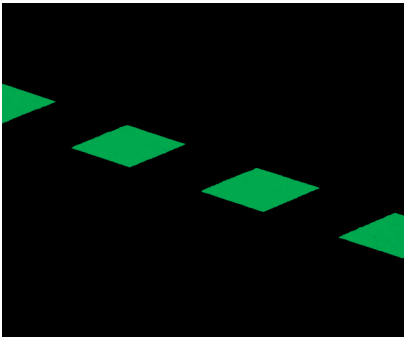
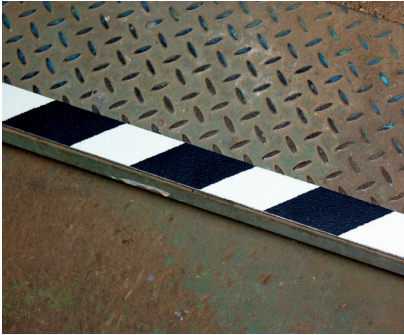
Colors and light reflection values (LRV)

Color	PMS / RAL	LRV (av.)	LRV (range)
Glow in the Dark (Hazard)	-	68	3

Friction coefficient

Test standard	Dry surface	Wet surface
Pendulum	102 TRL	71 TRL





GRIPFACTORY APPLICATION SERVICE

Can't figure it out or do you have any questions? Please contact the GripFactory Service Desk (+31 348 203000). For an additional charge you can have GripFactory Anti-Slip Glow in the Dark Tape applied by a certified applicator.